

二

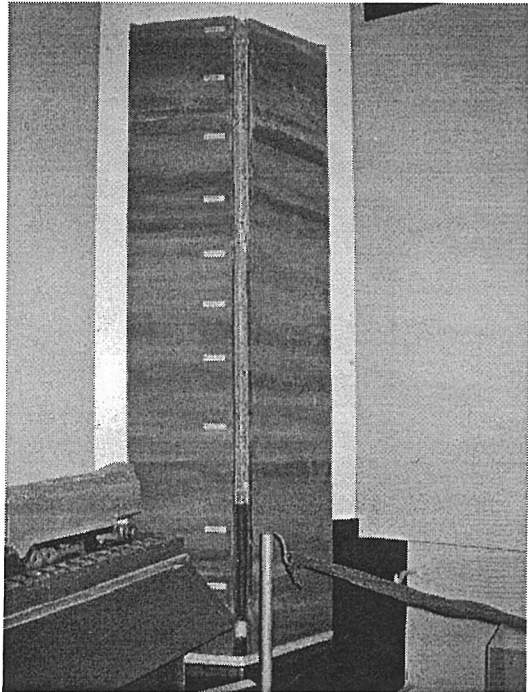
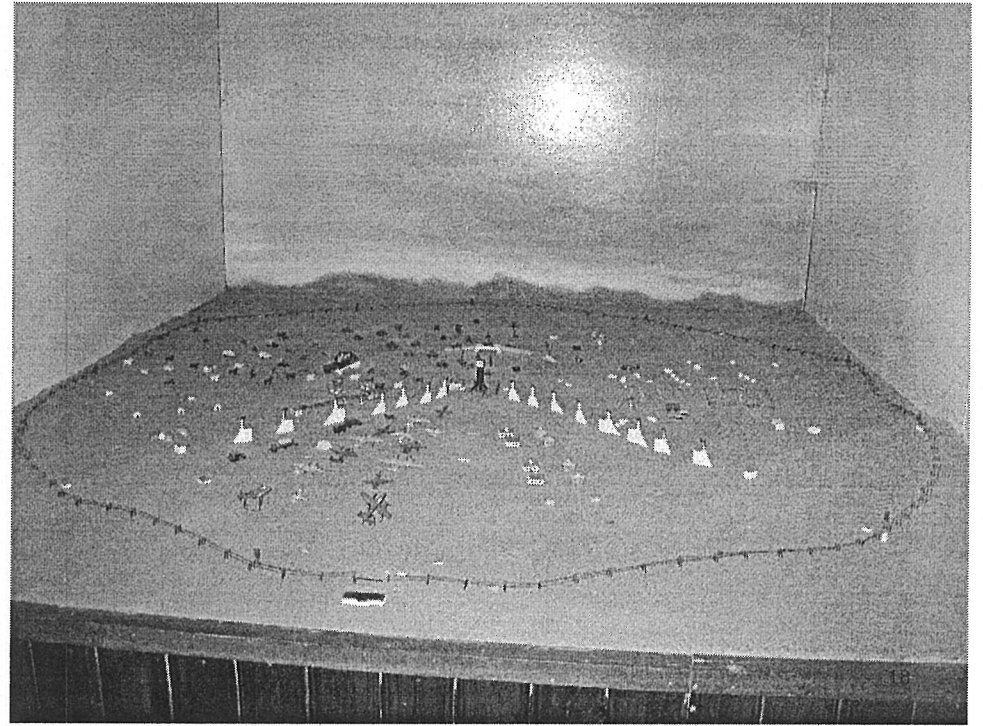
線量評価と疫学調査 Research plan of dosimetry and epidemiology

1. Dosimetry (線量評価)
 - 1-1. External dose (外部被曝線量) (Brick, tooth enamel, calculation: レンガ、歯、計算)
 - 1-2. Internal dose (Cs, Pu, Sr measurement: in soil, foods, human tissue (土壌、食物、他のCs、Puの測定))
2. Examination of thyroid, tooth etc. (甲状腺検診、歯の検診)
3. Chromosome aberration、(染色体異常)
4. Epidemiology, Statistics, Computer analysis、(疫学、統計、計算)
5. Risk estimation、(リスク計算)



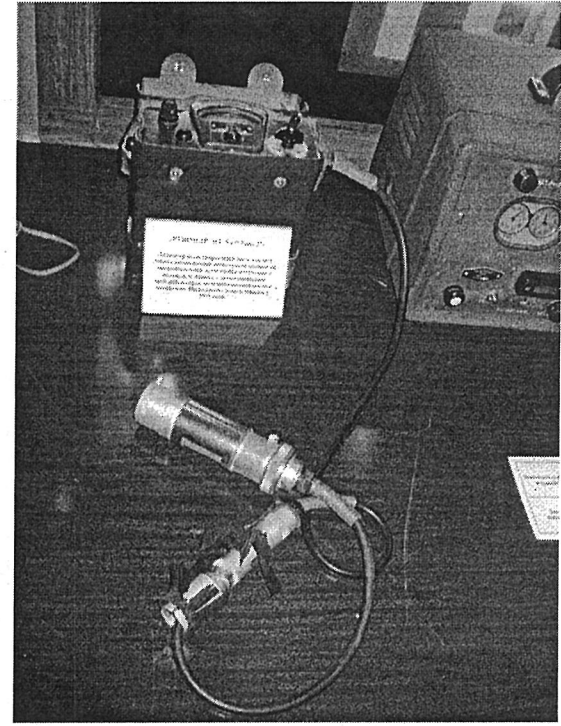
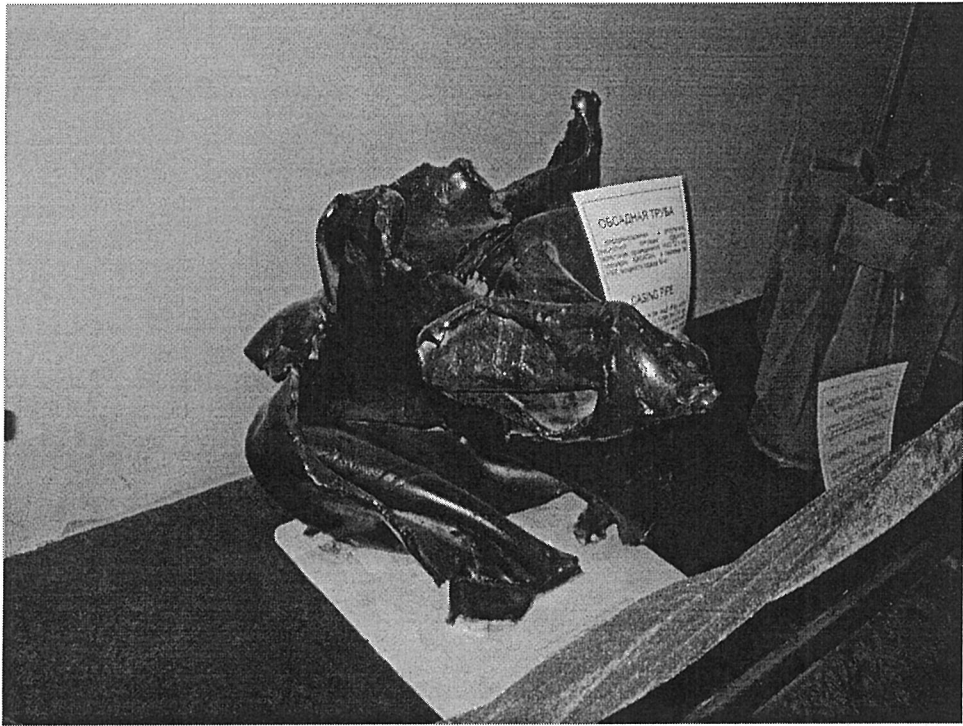


17



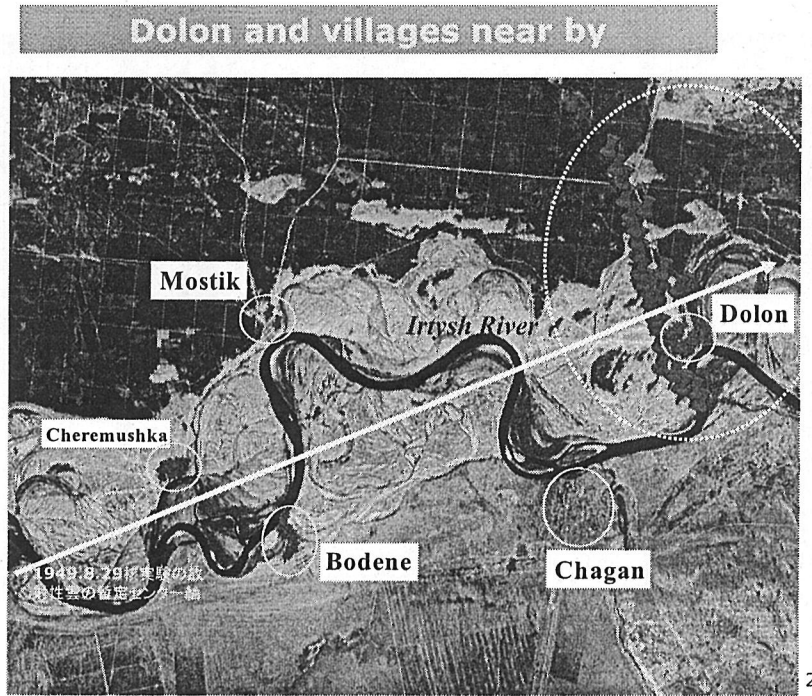
19



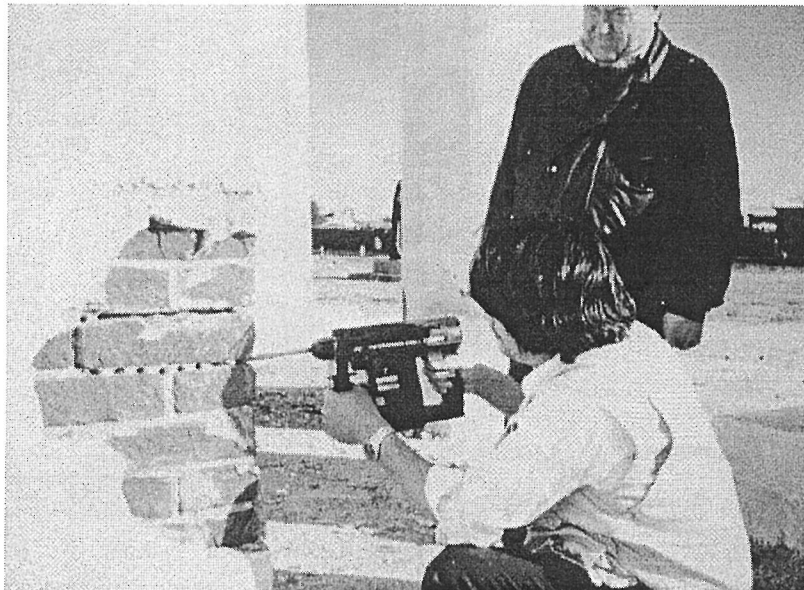




25



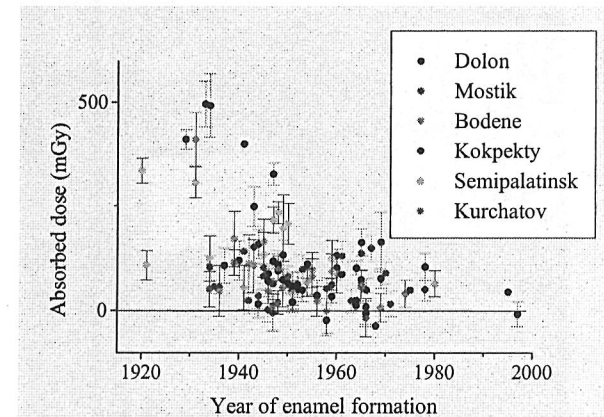
26



27

歯の測定

Experimental doses absorbed in enamel versus the year of enamel formation



28