

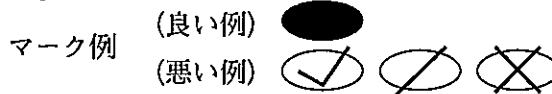
令和5年度（令和4年度実施）  
高知県公立学校教員採用候補者選考審査  
筆記審査（専門教養）

中学校    高等学校    特別支援学校    中学部・高等部  
英語

受審番号		氏名	
------	--	----	--

【注意事項】

- 1 審査開始の合図があるまで、この問題冊子の中を見ないでください。
- 2 解答用紙（マークシート）は2枚あります。切り離さないでください。
- 3 解答用紙（マークシート）は、2枚それぞれに下記に従って記入してください。  
○ 記入は、HBの鉛筆を使用し、該当する○の枠からはみ出さないよう丁寧にマークしてください。



- 訂正する場合は、消しゴムで完全に消してください。
- 氏名、受審する教科・科目、受審種別、受審番号を、該当する欄に記入してください。

また、併せて、右の例に従って、受審番号をマークしてください。

受 審 番 号				
万	千	百	十	一
1	2	3	4	5
○	○	○	○	○
●	○	○	○	○
○	●	○	○	○
○	○	○	○	○
○	○	○	○	○
○	○	○	○	○
○	○	○	○	○
○	○	○	○	○
○	○	○	○	○

- ※ 正しくマーク（正しい選択問題への解答及びマーク）していないと、正確に採点されませんので、注意してください。

記入例

（受審番号12345の場合）

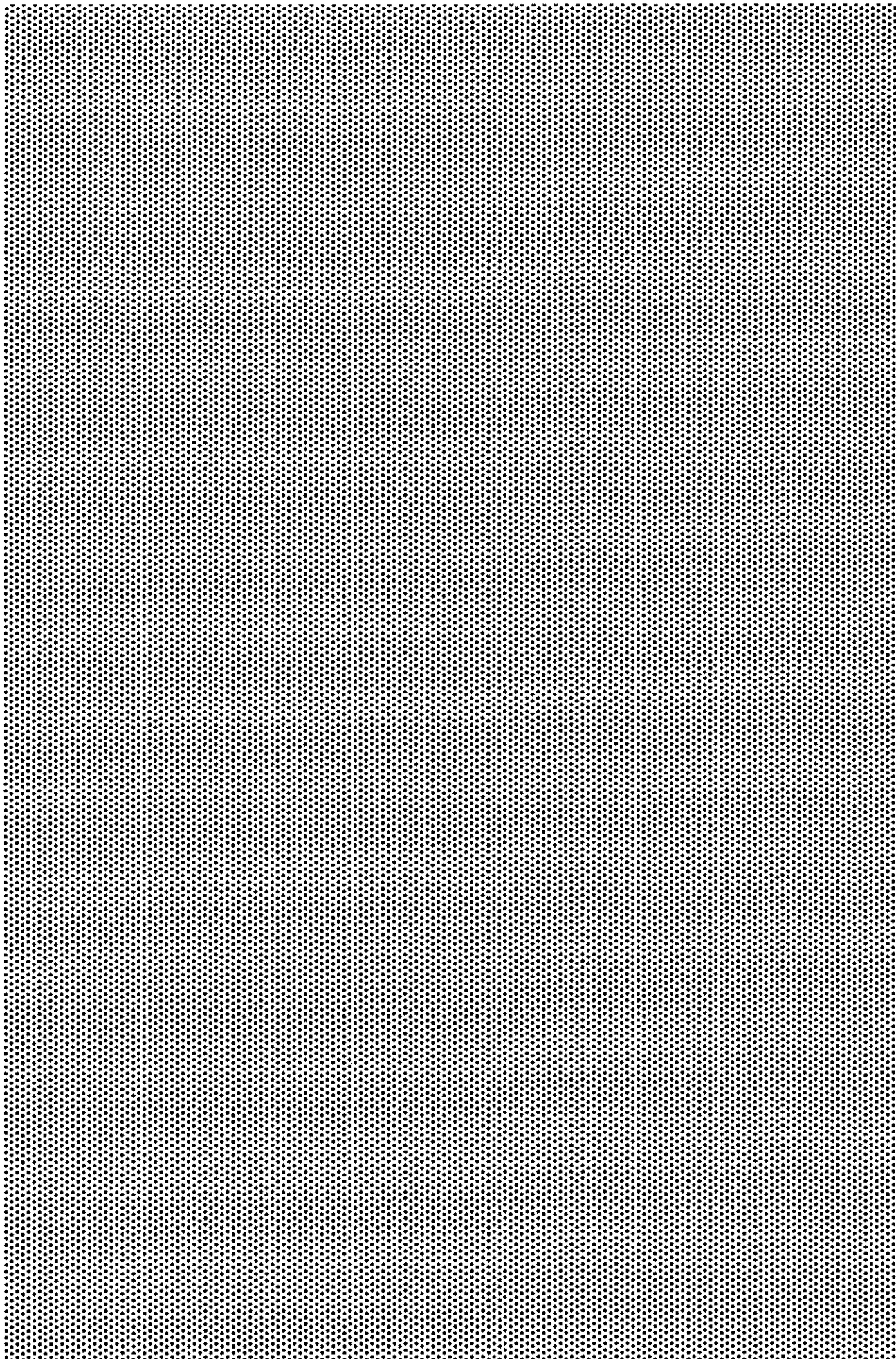
- 4 この問題は、【共通問題】、及び【選択問題 中学校・高等学校】、【選択問題 特別支援学校】の各問題から構成されています。選択問題で受審種別以外の問題を選択して解答した場合、解答は全て無効となります。
- 5 解答は、解答用紙（マークシート）の解答欄をマークしてください。例えば、解答記号 ア と表示のある問いに対してbと解答する場合は、下の(例)のようにアの解答欄の b をマークしてください。

(例)

ア	a	●	c	d	e	0	1	2	3	4	5	6	7	8	9	.	-	±
---	---	---	---	---	---	---	---	---	---	---	---	---	---	---	---	---	---	---

なお、一つの解答欄に対して、二つ以上マークしないでください。

- 6 筆記審査（専門教養）が終了した後、解答用紙（マークシート）のみ回収します。監督者から指示があれば、この問題冊子を、各自、持ち帰ってください。



## 【共通問題】

## 第1問

## Section 1 Listening Comprehension

Listen to the four statements and choose the one statement that best describes the picture.

(1)

a    b    c    d

(2)

a    b    c    d

21の2

(3)

a b c d

(4)

a b c d

(5) 

オ
---

a   b   c   d

## Section 2 Listening Comprehension

Listen to the six conversations and answer the questions.

- (1) Which statement is true about the conversation?
- a The man hasn't talked with his conversation partner, Yumi.
  - b The woman feels glad that Yumi is in her department.
  - c Yumi is the woman's conversation partner in her English class.
  - d The man knew that the woman and Yumi were in the same club.
- (2) What is the woman's secret to efficient shopping?
- a Doing yoga and walking to keep going physically and mentally.
  - b Listing what to buy just before going shopping.
  - c Making a list to follow from beginning to end.
  - d Drinking coffee after shopping is done.
- (3) What did the woman decide to do?
- a Participate in a meeting with ABC Advertising.
  - b Arrange a meeting with ABC Advertising.
  - c Approve the budget proposed by ABC Advertising.
  - d Adjourn a meeting until ABC Advertising is better prepared.
- (4) How much will the woman pay for the entrance fee?
- a Nothing.
  - b 2,500 yen.
  - c 4,500 yen.
  - d 5,000 yen.
- (5) Where will the man transfer money to?
- a To his bank account.
  - b To a branch of Yairo Bank.
  - c To a branch of Sakura Bank.
  - d He will not transfer money.
- (6) Why did Professor Lockwood see Ryo?
- a Because he is always late for her class.
  - b Because she wanted to advise him about his English.
  - c Because she found that he is not interested in her class.
  - d Because his report was not satisfactory.

## Section 3 Listening Comprehension

Listen to the three short passages and answer the questions.

- (1) Which of the following matches the passage?
- a Abandoned pets, leading with cats, are contributors to eco-disasters in the Everglades.
  - b The most abandoned pets in the Everglades are birds.
  - c Unwanted pets are sheltered in the Everglades.
  - d Various measures are being taken to help unwanted pets in the Everglades.
- (2) Which of the following does NOT match the passage?
- a Spending time outdoors is good for your health because it reduces stress and increases energy.
  - b If you have a nature prescription, you will be physically stronger than those who don't.
  - c The doctor's prescription was for his patient to spend time outdoors.
  - d Playing outdoors makes children rest their brain from the stress of school.
- (3) Which of the following matches the passage?
- a Temporary workers find work only through app-based digital platforms.
  - b Gig work only refers to work in the music business.
  - c Gig workers are sometimes sent to work at companies by an employment agency.
  - d Gig work is a sector of the economy which relies on task-based work.

## 第2問

1 Directions: In this section, (1) to (10), there are incomplete sentences. Beneath each sentence you will see four words or phrases, marked a to d. Choose one word or phrase for  ~  that best completes the sentence. Then, mark your answer on your answer sheet.

(1) There are many ways to have a healthy lifestyle. For example, it's necessary to drink  as you can.

- a as water much                      b as water many  
c as much water                      d as many water

(2) Power Soccer is a  team sport which combines the skill of the wheelchair user with the speed and power of the chair itself, to participate in an extremely challenging game similar to able-bodied football.

- a comparable    b comprehensive    c competitive    d confidential

(3) When people replace , they put up towers for TV reception. It was estimated that 200,000,000 birds died in collisions with these towers each year.

- a nature with towns and cities                      b towns and cities with nature  
c nature as towns and cities                      d towns and cities as nature

(4) In your blood there are special "soldier" cells in charge of fighting . They are called white blood cells, and as soon as you get a cut, your body will send a lot of white blood cells to the wound to get to work.

- a genes                      b germs                      c nutrition                      d immunity

(5) Digital detoxing is a growing phenomenon that serves  a reaction to the information overload coming with new media and digital connecting devices.

- a with                      b up                      c out                      d as

(6)  in the Mojave Desert and surrounded by mountains, Las Vegas is one of the sunniest and least humid cities in the USA. Summers are, however, very hot.

- a Locating    b Located    c Having been located    d Having located



(7) You can choose a yoga style that is  to your lifestyle. There are various types of yoga such as hatha yoga, power yoga and laughter yoga.

- a tailored      b delegated      c attributed      d entitled

(8) You may have seen a pitcher throw a curveball in baseball. It's a pitch that can  a batter because it looks like it's flying straight but then curves away as it crosses home plate.

- a have confused      b have been confused by  
c be confused by      d confuse

(9) Some lament that recent Olympic Games are  the noble origins of the Games some 30 centuries ago. But it turns out that the ancient Games were not as "noble" as some people want to believe.

- a the cost of      b a loss for      c nothing more than      d a far cry from

(10) According to a US survey, Japanese became the most common language used in blog posts in the fourth quarter of 2006. It turned out that Japanese  37 percent of all blog posts.

- a abided by      b accounted for      c alluded to      d abstained from

2 Directions: In this section, you will read two passages. There are five blanks in each passage. Beneath each passage you will see five choices, marked a to e. Choose one for each blank that best completes the sentences, and mark the second and fourth elements  ~  on your answer sheet.

(1)

- a
- b
- c
- d
- e

(2)

- a
- b
- c
- d
- e

3 Directions: In this section, you will read two passages. There is a blank in each passage. Beneath each passage, you will see three sentences, marked 1, 2, and 3. Choose the order of the sentences for the blank that best completes the passage. Then, mark your answer on your answer sheet.

(1)

1

2

3

a 1-3-2    b 2-1-3    c 3-1-2    d 3-2-1

21の10

(2)

1

2

3

a 1-3-2    b 2-1-3    c 2-3-1    d 3-1-2

## 第3問

Directions: There are blanks in the following definitions of technical terms in language teaching. Beneath each definition you will see four words or phrases, marked a to d. Choose one word or phrase for  ~  that best completes the definition. Then, mark your answer on your answer sheet.

(1)  is an approach to language teaching in which learners are not taught grammatical or other types of rules directly but are left to discover or induce rules from their experience of using the language.

- |                     |                      |
|---------------------|----------------------|
| a Implicit learning | b Explicit learning  |
| c Active learning   | d Inductive learning |

(2)  refers to the restrictions on how words can be used together, for example which prepositions are used with particular verbs, or which verbs and nouns are used together.

- |               |           |              |              |
|---------------|-----------|--------------|--------------|
| a Collocation | b Context | c Competence | d Conversion |
|---------------|-----------|--------------|--------------|

(3)  is a type of reading strategy in which the reader samples segments of a text in order to achieve a general understanding of its meaning.

- |               |            |            |               |
|---------------|------------|------------|---------------|
| a Summarizing | b Scanning | c Skimming | d Scaffolding |
|---------------|------------|------------|---------------|

(4)  is a purposeful collection of work that provides information about someone's efforts, progress or achievement in a given area. It is a learning as well as assessment tool.

- |            |              |           |             |
|------------|--------------|-----------|-------------|
| a Analysis | b Motivation | c Journal | d Portfolio |
|------------|--------------|-----------|-------------|

(5)  is the way in which a language is used by interlocutors.

- |               |               |             |                |
|---------------|---------------|-------------|----------------|
| a Acquisition | b Interaction | c Immersion | d Presentation |
|---------------|---------------|-------------|----------------|

第4問

- 1 Directions: You will read two passages. Each passage is followed by an incomplete statement and four options, marked a to d. Choose the best answer for  on the basis of what is stated or implied in the passage. Then, mark your answer on your answer sheet.

(1)

This passage suggests that .

- a English users have to learn how to take a good memo while listening
- b English learners need to take more classes to use their integrated language skills better
- c the idea of teaching four major language skills separately should be revised
- d the way of teaching four language skills should include testing students in the real world

(2)

According to this passage, .

- a motivation can compensate for learners' poor L2 ability in CLIL
- b learners with low proficiency can be successful in a strongly bilingual classroom
- c a good subject teacher without CLIL strategies can maintain levels of subject knowledge
- d it is difficult for CLIL students to learn art and physical education in L2

2 Directions: You will read the following passages with a figure. Beneath them, you will see four options, marked a to d. Choose the best answer for  ·  on the basis of what is implied in the passage. Then, mark your answer on your answer sheet.

(1)

According to this passage and Figure 12.1, *kill two birds with one stone* .

- a can be classified as a core idiom
- b can be classified as a figurative
- c can be classified as a literal
- d cannot be classified using this flowchart



(2)

According to this passage and Figure 4.2,  I .

- a Rosell-Aguilar's taxonomy gives emphasis on the significance of authentic materials
- b podcasts are useful exclusively in learning listening, grammar, and cultural components
- c podcasts are mainly used in flipped classrooms according to the recent studies
- d research has shown that the benefits of podcasts are not limited to improving only listening skills

【選択問題 中学校・高等学校】

第5問

Directions: You will read a passage. Beneath the passage, you will see five incomplete statements and four options, marked a to d. Choose the best option for  ~  on the basis of what is stated or implied in the passage. Then, mark it on your answer sheet.



(1) According to the passage, the author thinks that .

- a CALL teachers should value their own teaching experience instead of CALL theory
- b it is reasonable to assume that there is no comprehensive CALL theory
- c it is better to have a single concise CALL theory than to have multiple CALL theories
- d our teaching should be improved by trial and error over and over again

(2) According to the passage, Hubbard (2008) showed that .

- a CALL researchers used a variety of theories in their papers, not just educational and SLA theories
- b more than 50% of the papers with references to theories used ones about SLA and linguistics
- c there were more papers that used three or more theories than just one
- d there were more articles referring to theories of SLA than to ones of learning

(3) According to the passage, .

- a only two aspects need to be considered in the CALL theory
- b the status of theory of SLA research in CALL research is shiftable
- c the SLA theories allow CALL research to be conducted from multiple perspectives
- d CALL research has also led to the development of theories used in SLA research

(4) According to the passage, .

- a the presence of a teacher is essential for CALL as a tutor
- b a tool enables learners to strengthen their capacities
- c teachers create the instructional design in CALL from the technology
- d the distinction between tutors and tools is blurry

(5) The most appropriate title for this passage would be .

- a Comparison of Two Theories in CALL Research and Practice
- b Relationships Between Research and Practice in CALL
- c The Role of Computers in CALL Research
- d Theory in CALL Research and Practice

## 【選択問題 特別支援学校】

第5問 次の1～4の問いに答えなさい。

- 1 次の文は、令和3年6月に文部科学省より示された「障害のある子供の教育支援の手引～子供たち一人一人の教育的ニーズを踏まえた学びの充実に向けて～」の「第1編 障害のある子供の教育支援の基本的な考え方」の一部である。文中の  ～  に該当する語句を、それぞれ下のa～dから一つ選びなさい。

合理的配慮は、「障害者の権利に関する条約」第2条の定義において提唱された概念であり、その定義に照らし、我が国の学校教育においては、中央教育審議会初等中等教育分科会報告において、合理的配慮とは、「障害のある子どもが、他の子どもと  に『教育を受ける権利』を享有・行使することを確保するために、学校の設置者及び学校が必要かつ適当な変更・調整を行うことであり、障害のある子供に対し、その状況に応じて、学校教育を受ける場合に  に必要とされるもの」であり、「学校の設置者及び学校に対して、体制面、財政面において、均衡を失した又は過度の  を課さないもの」と定義されている。なお、障害者の権利に関する条約において、合理的配慮の否定は、障害を理由とする  に含まれるとされていることに留意する必要がある。

- |                                |        |       |       |      |
|--------------------------------|--------|-------|-------|------|
| <input type="text" value="ア"/> | a 平等   | b 均等  | c 対等  | d 同等 |
| <input type="text" value="イ"/> | a 習熟度別 | b 学年別 | c 課題別 | d 個別 |
| <input type="text" value="ウ"/> | a 対応   | b 負担  | c 義務  | d 責任 |
| <input type="text" value="エ"/> | a 差別   | b 区別  | c 分離  | d 偏見 |

- 2 次の表は、令和3年10月に文部科学省より示された「特別支援教育資料（令和2年度）」の「第1部 データ編」の表の一部である。表中の  ・  に該当する語句を、それぞれ下の a～d から一つ選びなさい。

出典：「学校基本調査」（文部科学省）  
※中等教育学校の特別支援学級はなし。

- a 病弱・身体虚弱    b 自閉症・情緒障害    c 知的障害    d 言語障害

- 3 文部科学省の「学校教育法施行規則の一部を改正する省令等の公布について（通知）（平成28年12月9日）」にある平成30年4月1日より施行された「通級による指導」に関する内容に該当するものを、次の a～d から一つ選びなさい。

- a 知的障害者を対象とする通級による指導の制度化  
b 情緒障害者を対象とする通級による指導の制度化  
c 幼稚園における通級による指導の制度化  
d 高等学校における通級による指導の制度化

- 4 平成29年4月告示の「特別支援学校 小学部・中学部学習指導要領 第7章 自立活動」に記載されている自立活動の内容について、次の(1)～(6)の区分に該当する項目を、それぞれ下のa～cから一つ選びなさい。

(1) 健康の保持	<input type="text" value="ク"/>	(2) 心理的な安定	<input type="text" value="ケ"/>
(3) 人間関係の形成	<input type="text" value="コ"/>	(4) 環境の把握	<input type="text" value="サ"/>
(5) 身体の動き	<input type="text" value="シ"/>	(6) コミュニケーション	<input type="text" value="ス"/>

- a 身体各部の状態の理解と養護に関すること。  
b 感覚や認知の特性についての理解と対応に関すること。  
c 日常生活に必要な基本動作に関すること。

- a 状況の理解と変化への対応に関すること。  
b 認知や行動の手掛かりとなる概念の形成に関すること。  
c 自己の理解と行動の調整に関すること。

- a 情緒の安定に関すること。  
b 他者の意図や感情の理解に関すること。  
c コミュニケーション手段の選択と活用に関すること。

- a 障害による学習上又は生活上の困難を改善・克服する意欲に関すること。  
b 身体の移動能力に関すること。  
c 感覚の補助及び代行手段の活用に関すること。

- a 姿勢と運動・動作の基本的技能に関すること。  
b 保有する感覚の活用に関すること。  
c 生活のリズムや生活習慣の形成に関すること。

- a 集団への参加の基礎に関すること。  
b 言語の形成と活用に関すること。  
c 健康状態の維持・改善に関すること。





