



## Prospects After the COVID-19 Pandemic (Kochi Port)

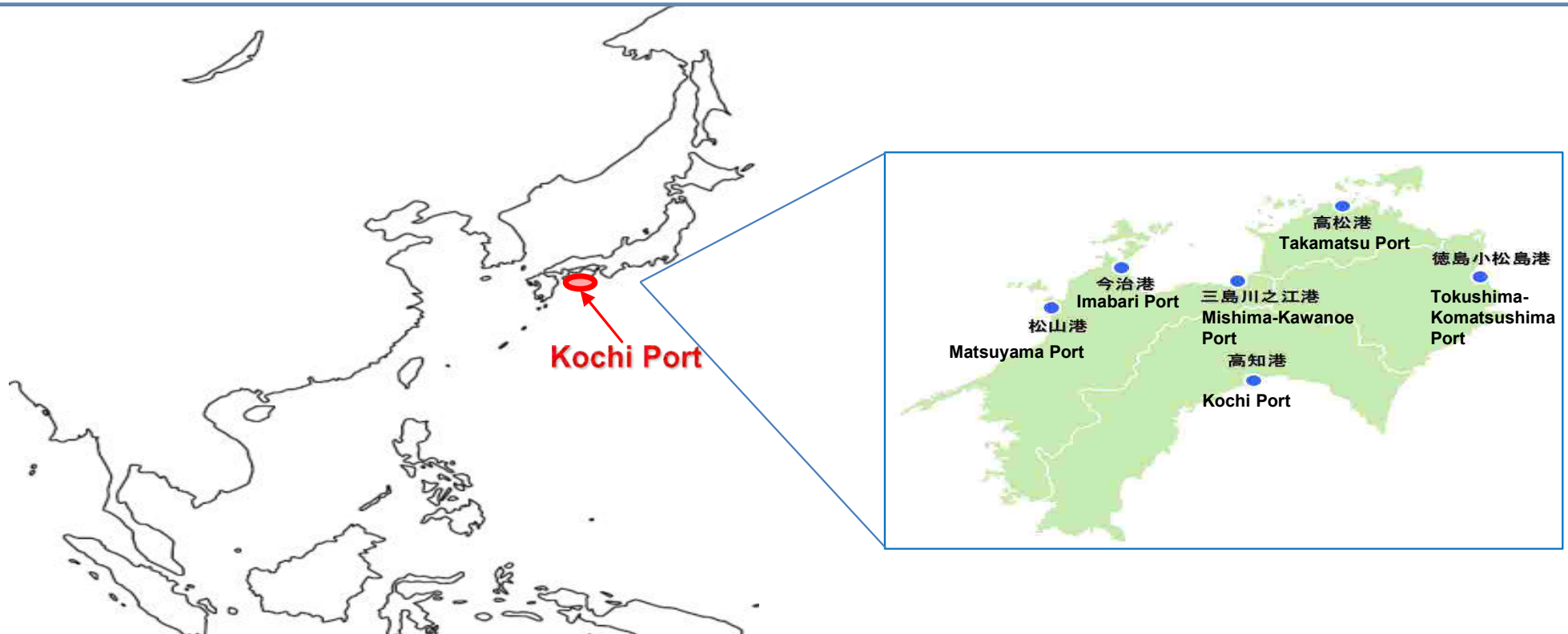
---



**I N A P 2023 in Kochi<sup>1</sup>**

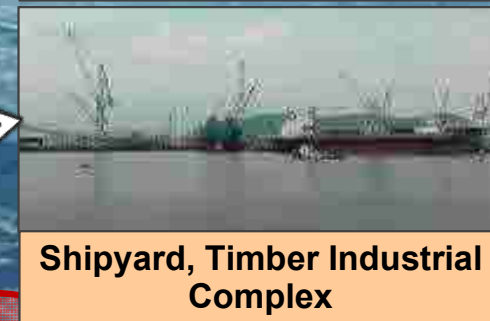
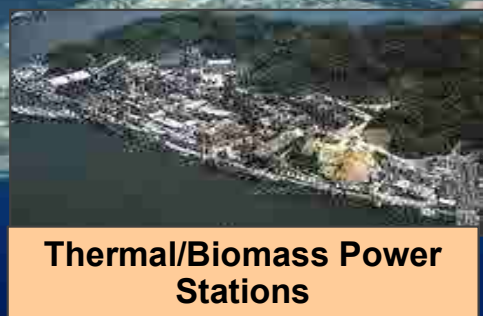
# Location of Kochi Port

- Kochi Prefecture is on the south side of Shikoku, which is in the southwest region of Japan.
- Kochi Port is centrally located in Kochi Prefecture facing the Pacific Ocean.
- It is the only port in Shikoku with a wide stretch of land along the Pacific Ocean, suitable for trade with Southeast Asian countries and accommodating large vessels.





# Kochi Port



Terminals for Container Vessels, Bulk Vessels, and Cruise Ships



## Prospects After the COVID-19 Pandemic (New Kochi Port Promotion Measures)

- At New Kochi Port, the number of cargoes handled and the number of port calls made by cruise ships increased steadily since its opening, but they were affected drastically by the spread of COVID-19.
- In order to quickly pull out of such a situation, Kochi Prefecture drew up “New Kochi Port Promotion Measures Part 3.”

### Goals of New Kochi Port Promotion Measures

#### Container Cargoes

Become a base for exports to Southeast Asian countries in Shikoku



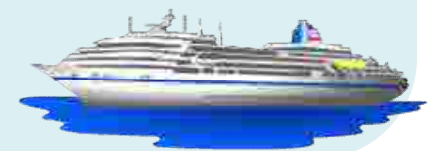
#### Bulk Cargoes

Become a distribution base that supports local industries



#### Cruise Ships

Become a base for international cruise ships on the Pacific Ocean side in western Japan



## Prospects After the COVID-19 Pandemic (1) Container Cargoes

---

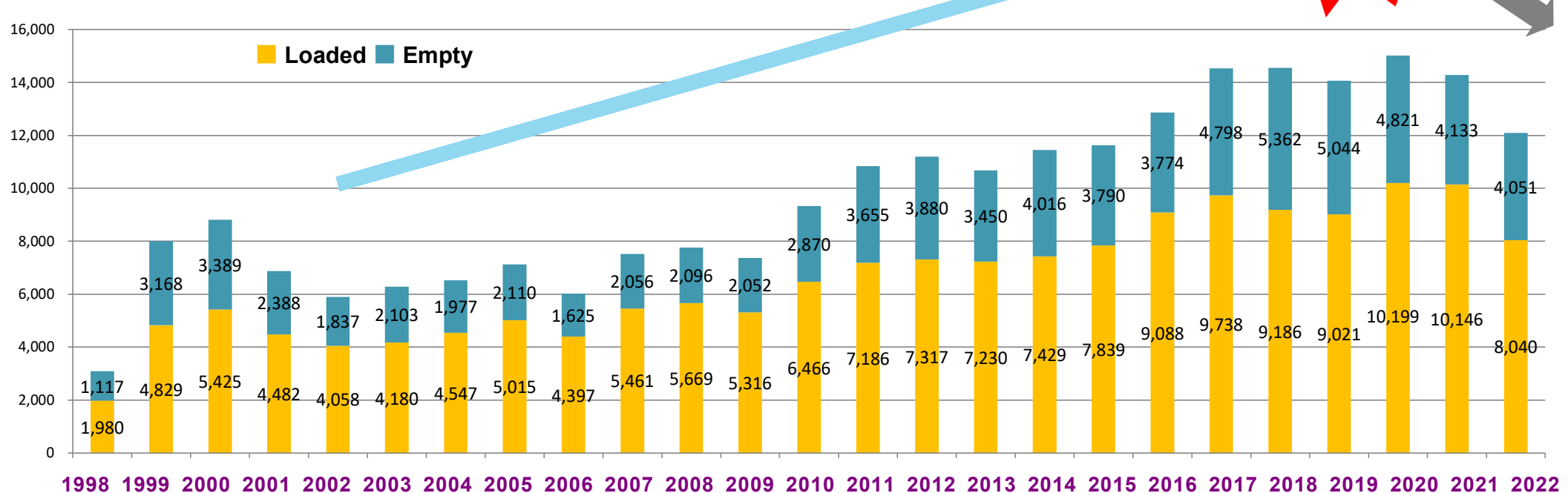




## Changes in the volume of containers handled at New Kochi Port

- Since the opening of the port in 1998, the volume of containers handled at New Kochi Port has increased continually. The volume of loaded containers exceeded 10,000 TEU in 2020.
- However, this trend took a downward turn after the spread of COVID-19 in 2020, decreasing to 8,040 TEU in 2022.

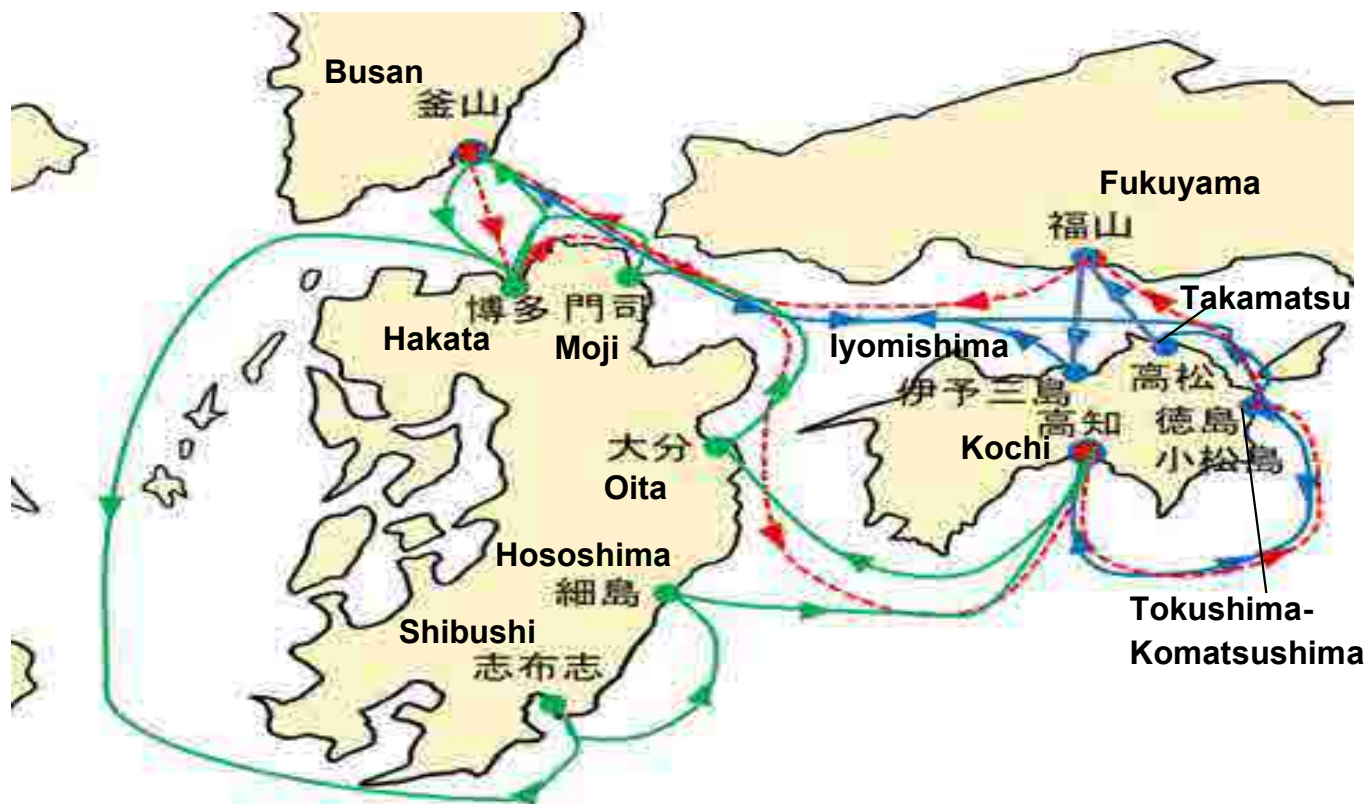
(Unit: TEU)





# Regular Container Vessel Routes to/from New Kochi Port

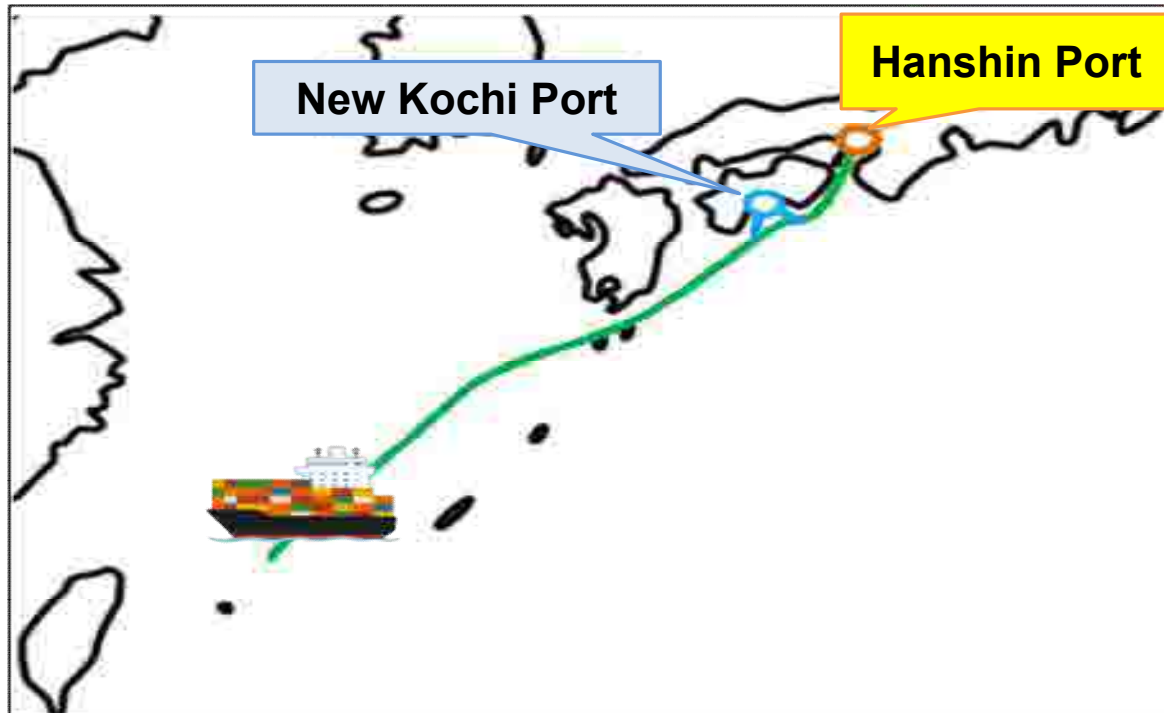
- The port provides services to two shipping companies that transport containers to Busan three times a week (Tuesdays, Thursdays, and Fridays).
- The port is scheduled to accommodate vessels on domestic routes starting next year



- (1) - Shipping routes of HEUNG A LINE CO., LTD.
- (2) - Shipping routes of SINOKOR MERCHANT MARINE CO., LTD.
- (3) - Shipping routes of CMA CGM (CNC)

# Prospects After the COVID-19 Pandemic

- Collect cargoes not only from Kochi Prefecture, but also widely from neighboring economic blocks.
- Invite shipping companies to establish direct shipping routes to Southeast Asian countries in future years, and take advantage of the location of the New Kochi Port.
- Take in the vibrant energy of Southeast Asian countries and India, where rapid economic growth is expected in the coming years, and promote economic growth in Shikoku.

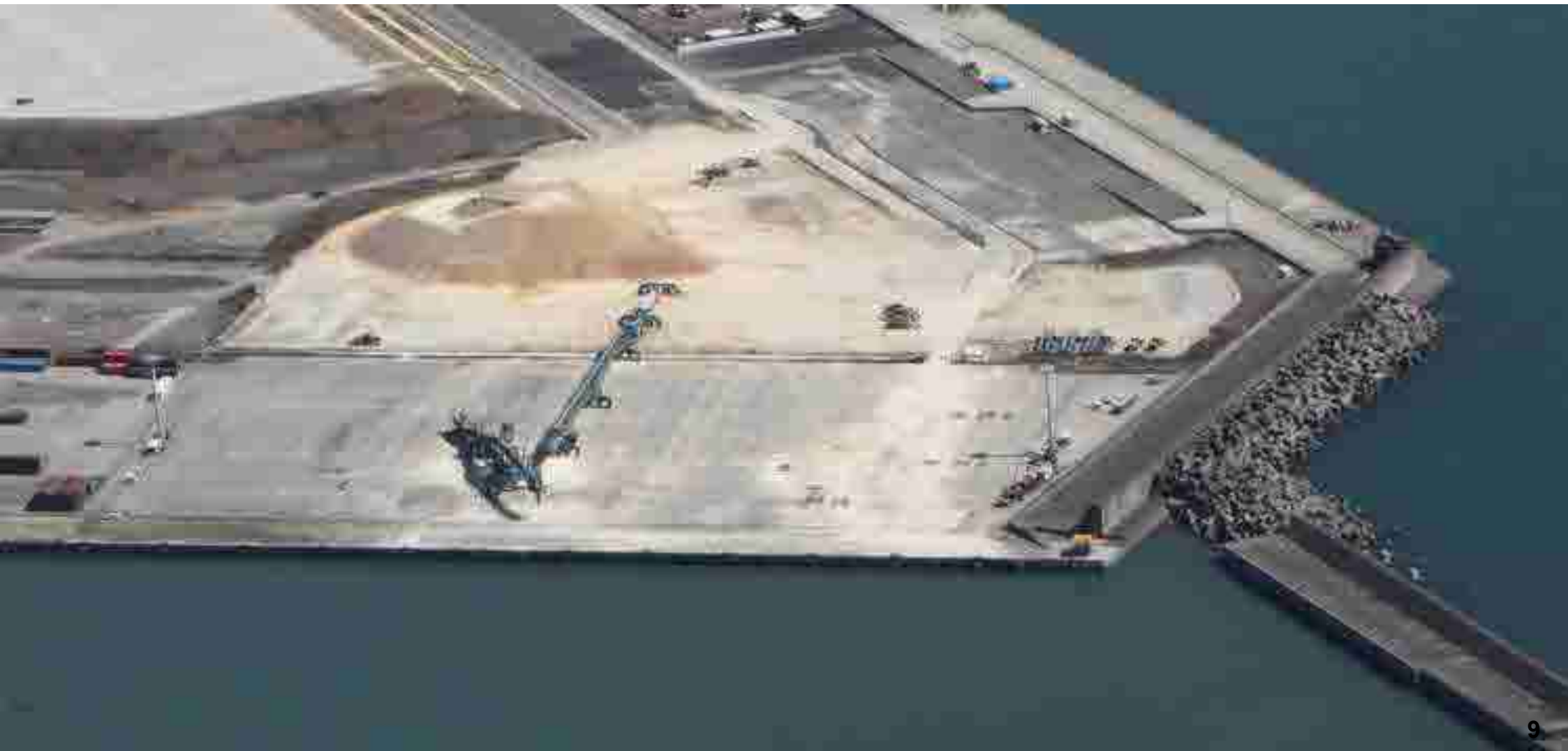


**Turn New Kochi Port into a base for exports to Southeast Asian countries in Shikoku**



## Prospects After the COVID-19 Pandemic (2) Bulk Cargoes

---





# Changes in the volume of bulk cargoes handled at New Kochi Port

- The volume of bulk cargoes handled at New Kochi Port has been around 1,000,000 ton.
- Most of them are an abundant supply of high quality limestone produced in the backland of New Kochi Port. (used to manufacture steel and cement)

Unit: x 1,000 ton

The Volume of Cargoes Handled at New Kochi Port



## Improvement of Port Functions to Accommodate the Increased Production of Limestone

- Although the shipment of limestone decreased due to the decline of steel production caused by the drop in the number of vehicles manufactured, it has picked up gradually.
- Since mines in other prefectures are depleting and their quality has gone down, a plan has been laid out to increase the production of quality limestone, which is available in abundance, for domestic steel plants.

**The plan is to increase the quantity of limestone from 888,000 ton to 1.5 million ton**

**Strategy 1: Expand the yard to accommodate the increasing volume of bulk cargoes**

- Discuss the shape and area required for an open storage yard with the parties concerned to accommodate the increased volume of limestone

**Strategy 2: Improve the functions of the cargo-handling machinery to accommodate larger bulk vessels**

- Improve the performance of ship loaders to accommodate increased volume of cargoes



## Prospects After the COVID-19 Pandemic (3) Cruise Ships

---

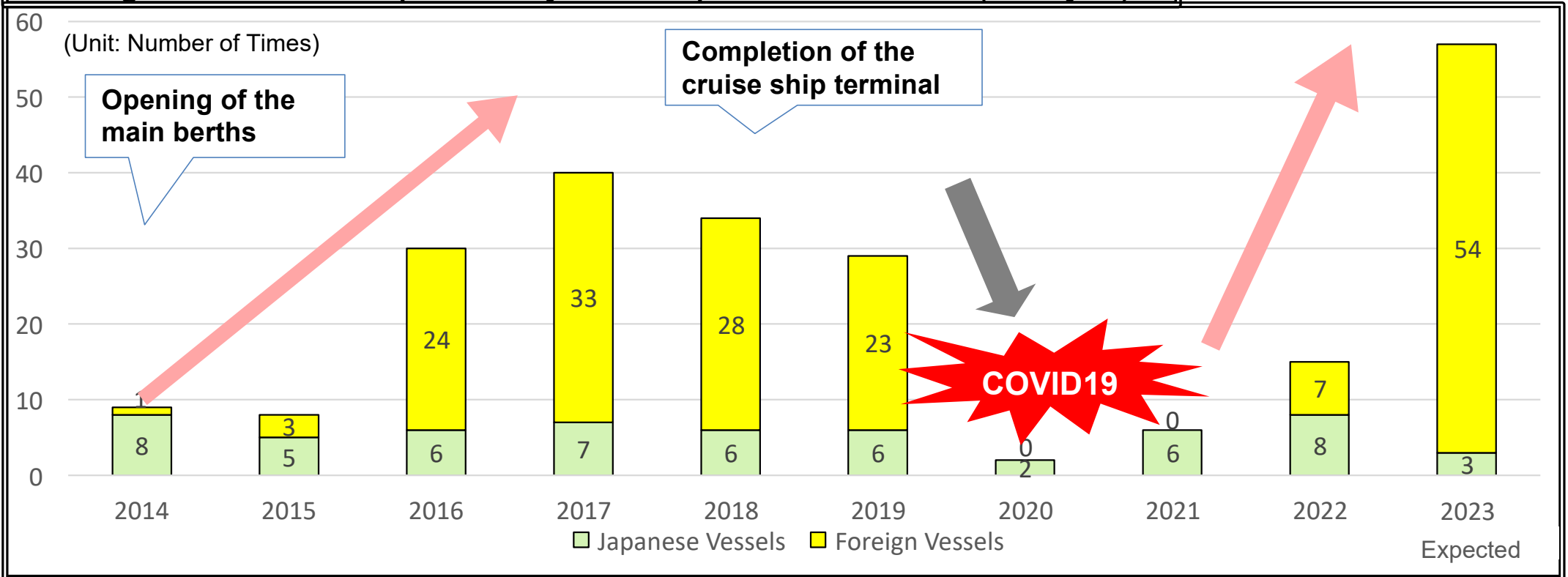




## Changes in the number of port calls at New Kochi Port

- The opening of main berths in May, 2014, resulted in the sudden increase of port calls by cruise ships starting in 2016
- The number of port calls dropped suddenly in March, 2020, as domestic cruise operation of foreign cruise ships was shut down due to the spread of COVID-19
- The number of port calls increased suddenly again in March, 2023, when foreign cruise ships resumed domestic cruise operation. The number of port calls in 2023 is expected to reach a record high of 57

Changes in the number of port calls by cruise ships at New Kochi Port (fiscal year)



# Prospects After the COVID-19 Pandemic

**The fundamental objective is to become a regular port of call for cruise ships on the Pacific Ocean side of western Japan, and expand its operation → The goal is to accommodate approximately 50 regular port calls a year**

## Strategy 1: Accommodate foreign cruise ships by taking into account the situations during and after the COVID-19 pandemic

### a) Show hospitality at the quay

- Show sustainable gestures of hospitality unique to Kochi by taking thorough infection prevention measures

### b) CIQ (Customs, Immigration, Quarantine)

- Modify and perform CIQ functions following the guidelines for foreign vessels, and take infection prevention measures

### c) Wider selection of destinations for optional tours

- Create and propose new optional tours that take advantage of newly built expressways in Kochi

### d) Private-Public Initiatives

- Strengthen partnerships with related institutions and accommodate more vessels through the Kochi Port Foreign Vessel Acceptance Committee



New Kochi Port Cruise Ship Terminal (opened in 2019)



Departure Event (Yosakoi Dance)



Proposals of New Optional Tours (trial tours)

# Prospects After the COVID-19 Pandemic

## Strategy 2:

Invite various cruise ships (Japanese/foreign cruise ships departing from/returning to Japan, cruise ships cruising the world)

### a) Implement effective promotions when foreign cruise ships resume domestic cruise operation in Japan

- Promote the port proactively by participating in cruise conventions held overseas as well as visiting foreign cruise ship companies and meeting their officials

### b) Invite various cruise ships in cooperation with ports of other prefectures on the Pacific Ocean side

- Continue cooperative relationships the port had in fiscal year 2022 with Tokyo, Shizuoka, Wakayama, and Kagoshima prefectures
- Propose suitable cruise routes for various types of ships, categorized by the size of ships, passenger capacity, class (casual/luxury), and departure/arrival points

## Strategy 3: Improve port functions to make port calls safe and pleasant

### a) Safe Docking

- Make policy proposals to the government to expedite the reinforcement of the south levee and construction of the second east levee.

### b) Accommodate Larger Cruise Ships

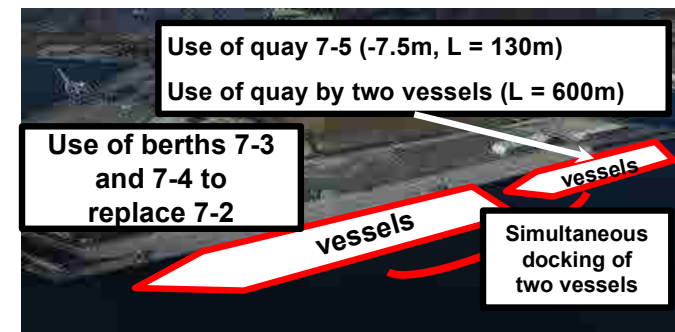
- Consider building boarding bridges, roofed pathways, etc.
- Consider using quay 7-5 (-7.5m)



Participate in cruise conventions held overseas



Hold joint webinars with other ports for foreign cruise ship companies and other targeted organizations



Consider using unused quay



# About INAP







# Promotion of Economic/Cultural Exchanges Through INAP



1) Participate  
in INAP  
Meetings



4) Promote  
International  
Tourism

**Initiatives to deepen  
the economic/cultural  
exchanges among  
INAP members**

2) Promote  
Economic  
Exchange



3) Introduce  
Cultures of  
Each Country





## Charms of Kochi (Nature, Food, Culture, History, Festival)



©VISIT KOCHI JAPAN





## Charms of Kochi (Nature, Food, Culture, History, Festival)



©VISIT KOCHI JAPAN



©VISIT KOCHI JAPAN





---

# Thank you for your attention.



高知県  
Kochi Prefecture



**I N A P 2023 in Kochi**