

統計高知

◆特集

- ・平成25年度学校保健統計調査結果 速報
—高知県の調査結果の概要—

◆インフォメーション

- ・午年生まれは高知県で54, 700人



リョーマ
Ryoma Holiday の休日

25

1

10

12

13

14

159

22

28

32

< 25 10 >

36

50

54,700

56

...

...

...

... ..

...

...

...

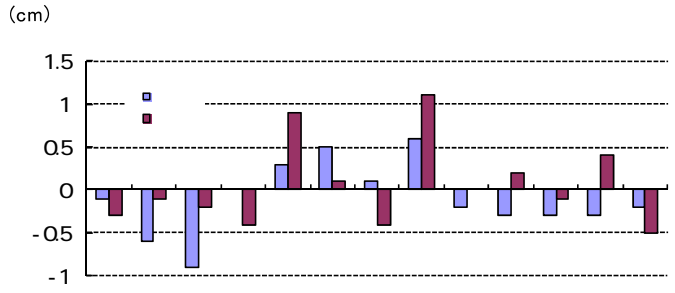
13

5 17 25 4

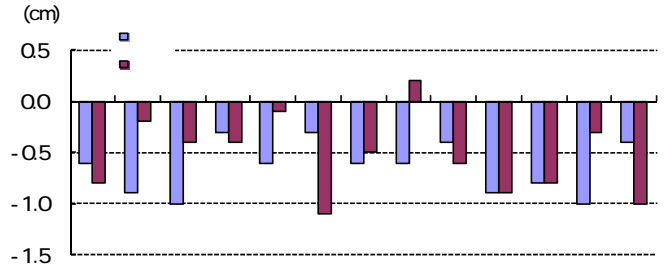
			()		()	
	27	1,487	886	59.6	1,052	70.7
	58	35,810	5,198	14.5	22,393	62.5
	38	19,444	3,922	20.2	13,251	68.1
	24	20,179	2,013	10.0	14,329	71.0
	147	76,920	12,019	15.6	51,025	66.3

25 4 6 30

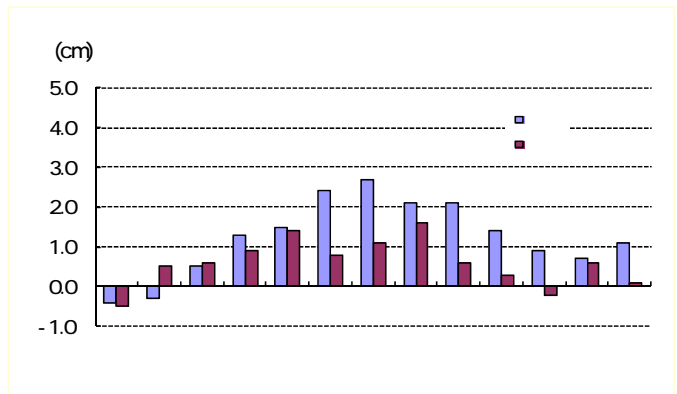
9 10 11 12 4
 9 10 12 14 16 5



12



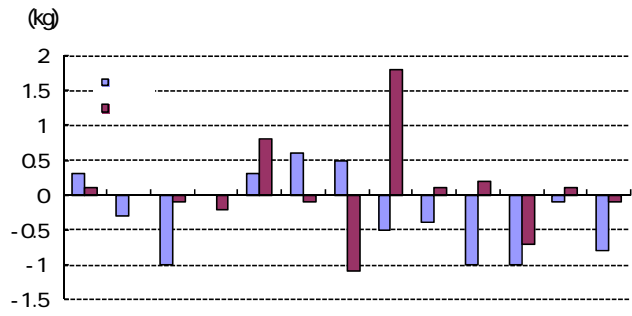
30 30 58
 5 6
 5 15
 2.7cm 12 1.6cm 11



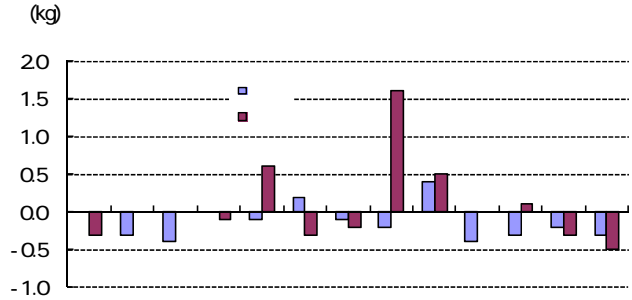
		(cm)															
		25				58				25				58			
		1098	-0.1	1104	-0.6	1102	-0.4	1088	-0.3	1096	-0.8	1093	-0.5				
		1157	-0.6	1166	-0.9	1160	-0.3	1154	-0.1	1156	-0.2	1149	0.5				
		121.4	-0.9	1224	-1.0	1209	0.5	121.2	-0.2	121.6	-0.4	120.6	0.6				
		127.9	0.0	128.2	-0.3	126.6	1.3	126.9	-0.4	127.3	-0.4	126.0	0.9				
		1330	0.3	133.6	-0.6	131.5	1.5	133.5	0.9	133.6	-0.1	132.1	1.4				
		138.7	0.5	139.0	-0.3	136.3	2.4	139.0	0.1	140.1	-1.1	138.2	0.8				
		144.4	0.1	145.0	-0.6	141.7	2.7	146.3	-0.4	146.8	-0.5	145.2	1.1				
		151.7	0.6	152.3	-0.6	149.6	2.1	152.0	1.1	151.8	0.2	150.4	1.6				
		159.1	-0.2	159.5	-0.4	157.0	2.1	154.2	0	154.8	-0.6	153.6	0.6				
		164.1	-0.3	165.0	-0.9	162.7	1.4	155.6	0.2	156.5	-0.9	155.3	0.3				
		167.5	-0.3	168.3	-0.8	166.6	0.9	156.2	-0.1	157.0	-0.8	156.4	-0.2				
		168.9	-0.3	169.9	-1.0	168.2	0.7	157.3	0.4	157.6	-0.3	156.7	0.6				
		170.3	-0.2	170.7	-0.4	169.2	1.1	157.0	-0.5	158.0	-1.0	156.9	0.1				

5 9 10 11 4
 5 9 12 13 14 16

6

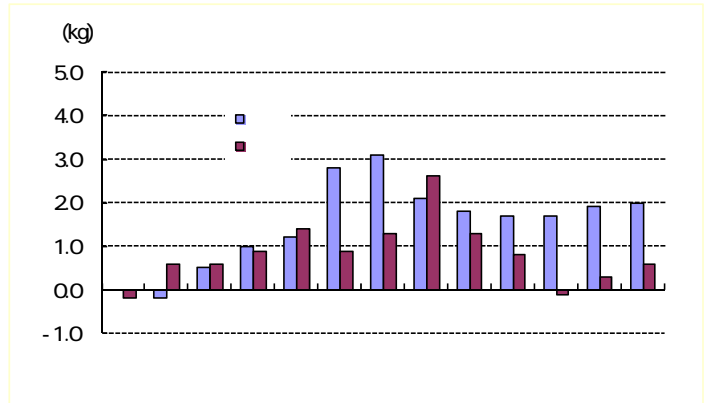


10 13 2
 9 12 13 15 4



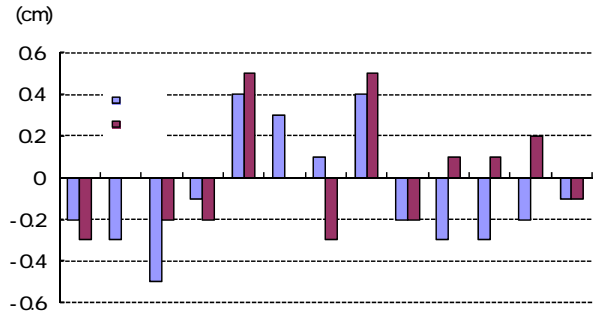
30 30
 58 5
 6 5 15
 3.1kg 12 2.6kg

11

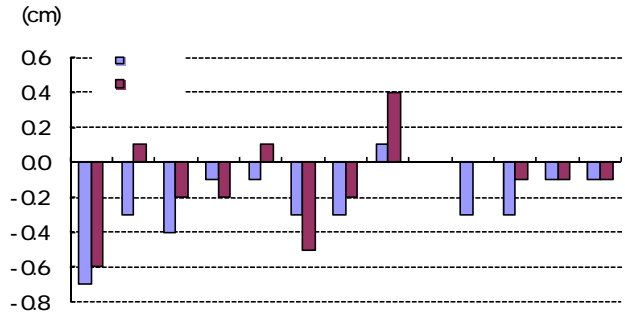


		(kg)															
		25				58				25				58			
		189	0.3	189	0.0	189	0.0	183	0.1	186	-0.3	185	-0.2				
		21.0	-0.3	21.3	-0.3	21.2	-0.2	209	0	209	0.0	203	0.6				
		235	-1	239	-0.4	230	0.5	235	-0.1	235	0.0	229	0.6				
		27.1	0	27.1	0.0	26.1	1.0	26.3	-0.2	26.4	-0.1	25.4	0.9				
		30.3	0.3	30.4	-0.1	29.1	1.2	30.6	0.8	30.0	0.6	29.2	1.4				
		34.5	0.6	34.3	0.2	31.7	2.8	33.7	-0.1	34.0	-0.3	32.8	0.9				
		38.2	0.5	38.3	-0.1	35.1	3.1	38.8	-1.1	39.0	-0.2	37.5	1.3				
		43.7	-0.5	43.9	-0.2	41.6	2.1	45.3	1.8	43.7	1.6	42.7	2.6				
		49.2	-0.4	48.8	0.4	47.4	1.8	47.6	0.1	47.1	0.5	46.3	1.3				
		53.6	-1	54.0	-0.4	51.9	1.7	49.9	0.2	49.9	0.0	49.1	0.8				
		58.6	-1	58.9	-0.3	56.9	1.7	51.5	-0.7	51.4	0.1	51.6	-0.1				
		60.8	-0.1	61.0	-0.2	58.9	1.9	52.2	0.1	52.5	-0.3	51.9	0.3				
		62.5	-0.8	62.8	-0.3	60.5	2.0	52.4	-0.1	52.9	-0.5	51.8	0.6				

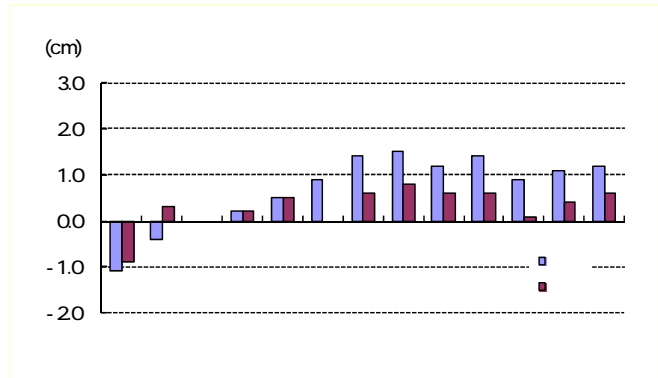
9 10 11 12 4
 9 12 14 15 16 5



12
 6 9 12 3



30 30
 58
 5 6 7
 5 7 10
 1.5cm 12 0.8cm 12



		(cm)															
		25				58				25				58			
		61.3	-0.2	620	-0.7	624	-1.1	609	-0.3	61.5	-0.6	61.8	-0.9				
		64.5	-0.3	64.8	-0.3	64.9	-0.4	64.5	0.0	64.4	0.1	64.2	0.3				
		67.2	-0.5	67.6	-0.4	67.2	0.0	67.1	-0.2	67.3	-0.2	67.1	0.0				
		70.1	-0.1	70.2	-0.1	69.9	0.2	69.7	-0.2	69.9	-0.2	69.5	0.2				
		72.5	0.4	72.6	-0.1	72.0	0.5	72.9	0.5	72.8	0.1	72.4	0.5				
		74.7	0.3	75.0	-0.3	73.8	0.9	75.3	0.0	75.8	-0.5	75.3	0.0				
		77.3	0.1	77.6	-0.3	75.9	1.4	79.1	-0.3	79.3	-0.2	78.5	0.6				
		81.3	0.4	81.2	0.1	79.8	1.5	82.5	0.5	82.1	0.4	81.7	0.8				
		84.8	-0.2	84.8	0.0	83.6	1.2	83.8	-0.2	83.8	0.0	83.2	0.6				
		87.8	-0.3	88.1	-0.3	86.4	1.4	84.9	0.1	84.9	0.0	84.3	0.6				
		90.0	-0.3	90.3	-0.3	89.1	0.9	85.4	0.1	85.5	-0.1	85.3	0.1				
		91.3	-0.2	91.4	-0.1	90.2	1.1	85.7	0.2	85.8	-0.1	85.3	0.4				
		91.9	-0.1	92.0	-0.1	90.7	1.2	85.8	-0.1	85.9	-0.1	85.2	0.6				

1.0

1.0

4

		41.0		65.1		51.6	1.0		66.2
		6.4	1.0	27.6	1.0	49.3			58.5
		4.6	()	10.4		8.8			5.5
		3.5		6.5		6.7			5.0
		3.1		4.8		6.2			5.0
		2.6		4.1	()	5.8			3.3
		2.6		4.0		4.7			3.1
		2.3		3.8		4.2			2.9
	()	2.2		3.8		4.0			2.9
		1.8		3.7		4.0			1.8

1.0

5

(

		1.0	0.3											
{ 10 11 { 12 13 14 { 15 16 17	X	X	0.5	2.6	2.3	6.4	41.0	14.0	27.0	2.6	...	0.9	3.1	
		27.6	8.1	0.4	4.1	6.5	3.7	65.1	29.2	35.8	2.4	3.8	1.0	4.0
		14.9	0.5	0.7	8.9	10.0	4.3	63.7	26.2	37.6	2.2	3.8	0.5	4.0
		18.4	2.2	0.6	3.1	6.2	7.0	69.4	27.2	42.2	2.6	...	0.7	3.9
		23.8	4.6	0.4	4.1	7.0	3.4	70.8	31.5	39.3	1.7	...	0.6	4.1
		29.8	8.5	0.2	4.2	6.4	3.7	70.1	31.9	38.2	2.0	...	0.5	4.8
		37.9	15.1	0.4	3.6	7.0	1.7	63.4	30.1	33.3	3.3	...	1.1	3.9
		38.4	16.1	0.1	0.8	2.8	2.7	54.2	28.3	25.8	2.1	...	2.4	3.6
		49.3	25.6	2.7	1.5	8.8	4.0	51.6	31.0	20.5	2.3	4.7	4.0	2.1
		50.1	26.0	3.6	2.8	11.2	4.4	47.8	30.0	17.8	2.4	4.7	3.9	2.4
		48.6	24.7	1.5	0.6	6.7	3.7	49.4	29.5	20.0	1.7	...	3.8	2.1
		49.3	26.0	3.1	1.0	8.4	4.0	57.5	33.6	23.8	2.8	...	4.2	1.9
		66.2	46.0	0.6	0.2	5.0	1.2	58.5	33.1	25.4	2.9	5.5	1.7	1.8
		61.6	41.1	0.8	0.2	5.4	1.4	51.3	28.8	22.5	2.5	5.5	2.2	1.7
		69.4	49.2	0.5	0.2	4.9	1.0	60.3	34.2	26.0	3.2	...	1.2	1.8
		67.7	47.6	0.6	0.1	4.7	1.1	64.0	36.3	27.7	2.8	...	1.5	1.8

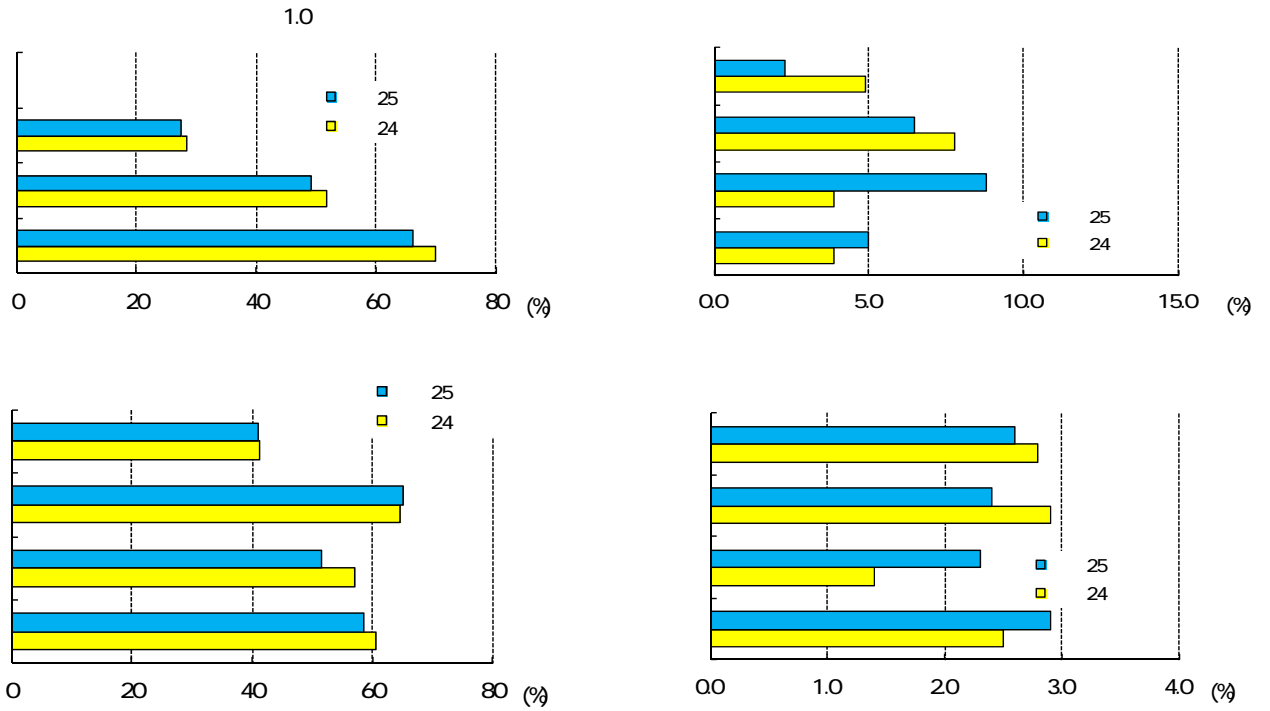
...
2 X

5

100 5 50

1

1.0



6

	1.0		0.3											
24	X	X	0.2	3.8	4.9	5.3	41.2	14.7	26.5	2.8	...	0.7	1.8	
25	X	X	0.5	2.6	2.3	6.4	41.0	14.0	27.0	2.6	...	0.9	3.1	
	X	X	0.3	-1.2	-2.6	1.1	-0.2	-0.7	0.5	-0.2	...	0.2	1.3	
24	28.4	8.2	0.5	4.6	7.8	4.5	64.5	27.5	37.1	2.9	6.3	0.9	3.2	
25	27.6	8.1	0.4	4.1	6.5	3.7	65.1	29.2	35.8	2.4	3.8	1.0	4.0	
	-0.8	-0.1	-0.1	-0.5	-1.3	-0.8	0.6	1.7	-1.3	-0.5	-2.5	0.1	0.8	
24	51.9	25.9	0.6	0.7	3.9	2.5	57.0	32.2	24.8	1.4	5.9	3.0	1.2	
25	49.3	25.6	0.7	1.5	8.8	4.0	51.6	31.0	20.5	2.3	4.7	4.0	2.1	
	-2.6	-0.3	0.2	0.8	4.9	1.5	-5.4	-1.2	-4.3	0.9	-1.2	1.0	0.9	
24	70.0	48.3	0.9	0.3	3.9	1.2	60.6	35.3	25.3	2.5	5.1	2.2	1.3	
25	66.2	46.0	0.6	0.2	5.0	1.2	58.5	33.1	25.4	2.9	5.5	1.7	1.8	
	-3.8	-2.3	-0.3	-0.1	1.1	0.0	-2.1	-2.2	0.1	0.4	0.4	-0.5	0.5	

2 X

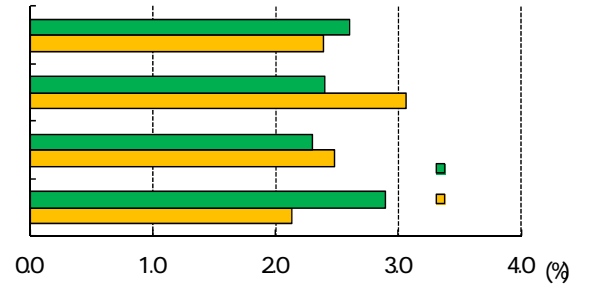
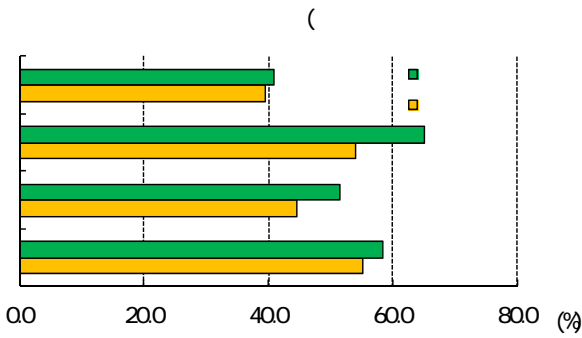
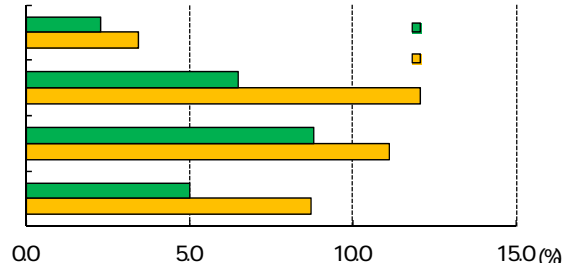
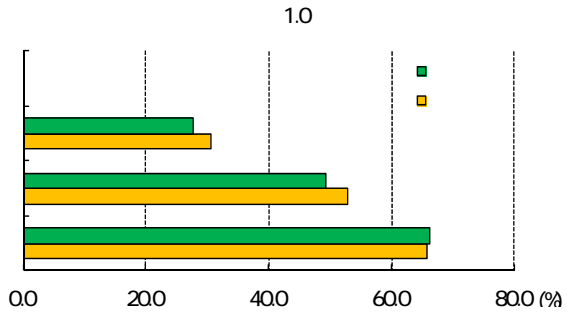
5

100 5 50

1

1.0

11.0%



7

	1.0		03										
	24.53	0.73	2.09	2.58	3.44	1.37	39.51	16.01	23.50	2.39	...	0.89	2.13
	X	X	0.5	2.6	2.3	6.4	41.0	14.0	27.0	2.6	...	0.9	3.1
	X	X	-1.6	0.0	-1.1	5.0	1.5	-2.0	3.5	0.2	...	0.0	1.0
	30.52	8.38	5.32	5.43	12.07	1.32	54.14	27.18	26.96	3.06	2.62	0.74	4.15
	27.6	8.1	0.4	4.1	6.5	3.7	65.1	29.2	35.8	2.4	3.8	1.0	4.0
	-2.9	-0.3	-4.9	-1.3	-5.6	2.4	11.0	2.0	8.8	-0.7	1.2	0.3	-0.2
	52.79	25.15	4.63	3.89	11.11	0.67	44.59	24.92	19.66	2.48	3.44	2.45	3.22
	49.3	25.6	2.7	1.5	8.8	4.0	51.6	31.0	20.5	2.3	4.7	4.0	2.1
	-3.5	0.5	-1.9	-2.4	-2.3	3.3	7.0	6.1	0.8	-0.2	1.3	1.6	-1.1
	65.84	33.40	3.26	2.15	8.74	0.47	55.12	31.45	23.67	2.14	3.19	2.68	1.90
	66.2	46.0	0.6	0.2	5.0	1.2	58.5	33.1	25.4	2.9	5.5	1.7	1.8
	0.4	X	-2.7	-2.0	-3.7	0.7	3.4	1.7	1.7	0.8	2.3	-1.0	-0.1

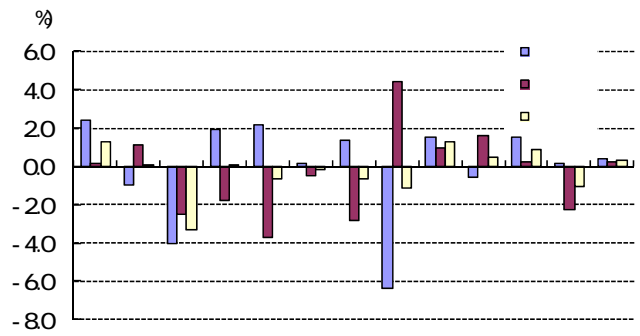
2 X

5

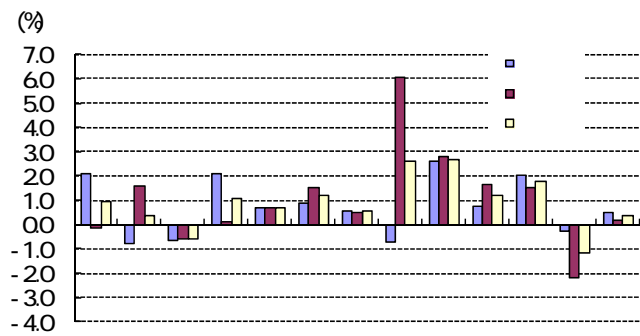
100 5 50

1

6 7 12 14 4
 7 8 9 10 11 16 6

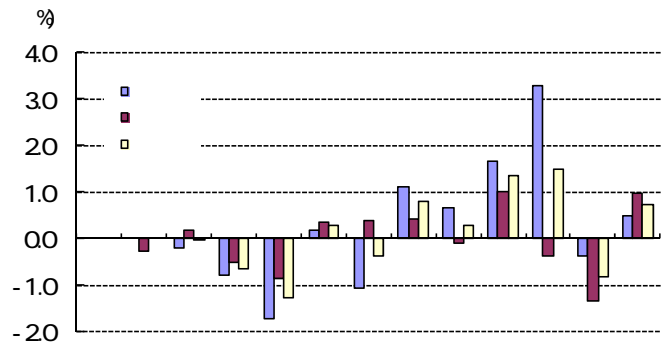


6 7 12 16 4
 5 7 16 3

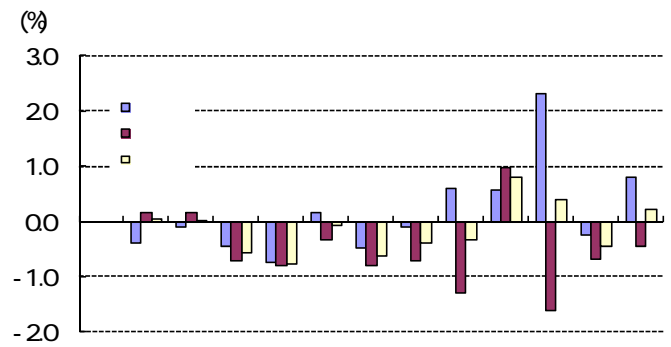


														(%)	
		3.39	1.25	2.43	0.96	4.45	2.41	2.38	2.07	2.37	0.14	2.49	-0.12		
		4.41	0.07	4.05	0.36	3.37	-0.95	4.18	-0.81	5.51	1.15	3.91	1.60		
		4.81	-3.29	5.42	-0.61	4.80	-4.06	5.47	-0.67	4.82	-2.51	5.38	-0.56		
		7.88	0.10	6.80	1.08	9.34	1.95	7.26	2.08	6.43	-1.75	6.31	0.12		
		8.92	-0.68	8.26	0.66	9.57	2.20	8.90	0.67	8.25	-3.68	7.58	0.67		
		10.67	-0.18	9.47	1.20	11.79	0.19	10.90	0.89	9.51	-0.53	7.96	1.55		
		9.92	-0.63	9.37	0.55	10.60	1.36	10.02	0.58	9.17	-2.79	8.69	0.48		
		12.20	-1.15	9.62	2.58	9.96	-6.35	10.65	-0.69	14.58	4.44	8.54	6.04		
		11.12	1.25	8.42	2.70	11.55	1.54	8.97	2.58	10.66	0.93	7.83	2.83		
		9.05	0.49	7.85	1.20	9.01	-0.57	8.27	0.74	9.09	1.59	7.42	1.67		
		11.38	0.85	9.58	1.80	13.11	1.48	11.05	2.06	9.57	0.20	8.08	1.49		
		7.88	-1.04	9.07	-1.19	10.19	0.18	10.46	-0.27	5.46	-2.26	7.66	-2.20		
		9.75	0.34	9.35	0.40	11.32	0.42	10.85	0.47	8.02	0.20	7.83	0.19		

7 8 9 11 16 5
 6 8 9 13 15 16 6



7 6 7 8 9 11 12 16
 8 9 10 11 12 13 15
 16 17 9



		(%)											
		-	-	0.35	-	-	-	0.36	-	-	-	0.34	-
		0.53	0.00	0.50	0.03	0.29	-	0.39	-0.39	0.77	-0.28	0.62	0.15
		0.55	-0.02	0.53	0.02	0.30	-0.21	0.40	-0.10	0.81	0.18	0.66	0.15
		0.45	-0.64	1.02	-0.57	0.54	-0.79	0.98	-0.44	0.36	-0.49	1.06	-0.70
		1.08	-1.28	1.84	-0.76	1.04	-1.71	1.78	-0.74	1.11	-0.85	1.90	-0.79
		2.60	0.27	2.68	-0.08	2.63	0.18	2.48	0.15	2.56	0.37	2.89	-0.33
		2.20	-0.37	2.82	-0.62	2.43	-1.07	2.90	-0.47	1.94	0.38	2.74	-0.80
		2.87	0.80	3.27	-0.40	2.33	1.13	2.43	-0.10	3.45	0.44	4.16	-0.71
		2.12	0.29	2.45	-0.33	2.05	0.68	1.46	0.59	2.20	-0.09	3.48	-1.28
		2.90	1.36	2.11	0.79	2.15	1.68	1.57	0.58	3.66	1.02	2.68	0.98
		3.09	1.48	2.70	0.39	5.02	3.28	2.70	2.32	1.09	-0.38	2.69	-1.60
		1.47	-0.82	1.93	-0.46	1.63	-0.37	1.88	-0.25	1.29	-1.32	1.98	-0.69
		1.99	0.73	1.78	0.21	2.65	0.50	1.84	0.81	1.26	0.96	1.72	-0.46